

PRODUCT ANALYSIS



1333 Gateway Drive Suite 1023
 Melbourne FL, 32901
 321-313-5099
sales@canaverallaboratories.com

Sample Information

Producer: Coast to Coast Natural

Strain: UNK

Contact: Jamila Mammadova
 jamila@ctcnatural.com

Sample Type: Tablet

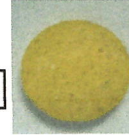
Lab Sample ID: S001

Sampling Date: UNK

Sample Received: 9-Jan-19

Analysis Completed: 9-Jan-19

Origin Lot# : OHPetTabJoint300

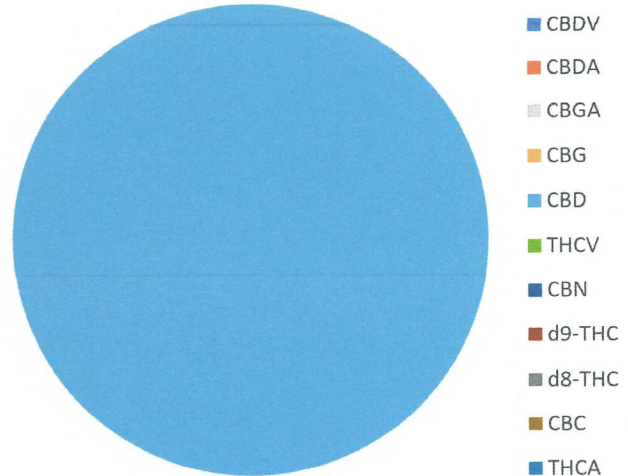


Sample Weight (g)	Dosage (mg)
1.81	2.30

Address: 3361 Fairline Farms Road
 Wellington, FL 33414

Cannabinoid Profile

Compound	Concentration	Unit	Concentration	Unit
CBDV	Not Obs.	%	Not Obs.	mg/g
CBDA	Not Obs.	%	Not Obs.	mg/g
CBGA	Not Obs.	%	Not Obs.	mg/g
CBG	Not Obs.	%	Not Obs.	mg/g
CBD	0.127	%	1.27	mg/g
THCV	Not Obs.	%	Not Obs.	mg/g
CBN	Not Obs.	%	Not Obs.	mg/g
d9-THC	Not Obs.	%	Not Obs.	mg/g
d8-THC	Not Obs.	%	Not Obs.	mg/g
CBC	Not Obs.	%	Not Obs.	mg/g
THCA	Not Obs.	%	Not Obs.	mg/g
Total CBD	0.127	%	1.27	mg/g
Total THC	Not Obs.	%	Not Obs.	mg/g



Requested Deviations:

Yes No

Approved by:

[Signature]

Date: 11 Jan 19

Daniel Vorisek, PhD. Technical Director

All results presented within in this report pertain only to the sample tested as described in the Sample Information section above. Sample was homogenized during sample preparation for analysis. Canaveral Laboratories was not involved in the statistical sampling of the production lot or batch and cannot state any association of the sample results to the production lot or batch.

This report may not be reproduced except in full, without written approval from Canaveral Laboratories LLC.

Potency - HPLC/UV

Trace - Trace Quantities

Not Obs. - Not observed.

<LOQ - Below limit of quantification (below 1 ug/mL)

mg - milligram; g - gram

Total CBD = (%CBDA * 0.877) + %CBD

Total THC = (%THCA * 0.877) + %d9-THC